

STAY SAFE FROM RED FIRE ANTS

DETECTED IN FARMING REGIONS IN QLD & NSW

FIRE ANTS ARE VERY AGGRESSIVE WHEN THEIR NESTS ARE DISTURBED. THEY USUALLY MOVE QUICKLY, ALLOWING LARGE NUMBERS TO MOVE ONTO HUMANS BEFORE THEY ARE DETECTED

Stings from fire ants can cause a very painful, burning, itching sensation, lasting up to 1 hour. Multiple stings give a sensation the body is on fire

CAUTION • BE AWARE • STAY SAFE • CAUTION • BE AWARE • STAY SAFE • CAUTION



KNOW WHAT TO LOOK FOR

Fire ants are copper brown in colour with a darker abdomen, measure 2–6 mm in size, and vary in sizes within one nest

LOOK FOR NESTS IN:

- sunny, open grassy areas
- disturbed soil
- rotten logs
- roadsides
- paddocks
- fence lines
- cropped land
- under piles of leaves
- along pavers and walls
- piles of organic matter
- near dams
- along irrigation lines
- at edges of farmed land

CHECK A SUSPECT NEST

Nests are mounds of loose, crumbly or fluffy looking soil, like honeycomb, up to 40 cm high with no obvious entrance holes

- Wear protective clothing, boots, and gloves
- Poke the nest with a long stick and observe from a distance
- Watch for their colour, size, and swarming behaviour

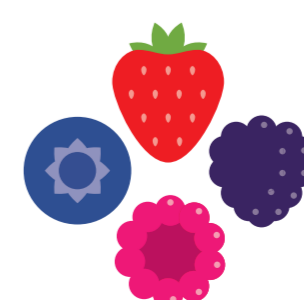
WORKERS

IF YOU SEE ANY SIGN OF FIRE ANTS REPORT IT IMMEDIATELY TO:

STAFF

REPORT ANY SUSPECTED SIGHTINGS TO:
www.fireants.org.au/report

13 22 68



berries
AUSTRALIA